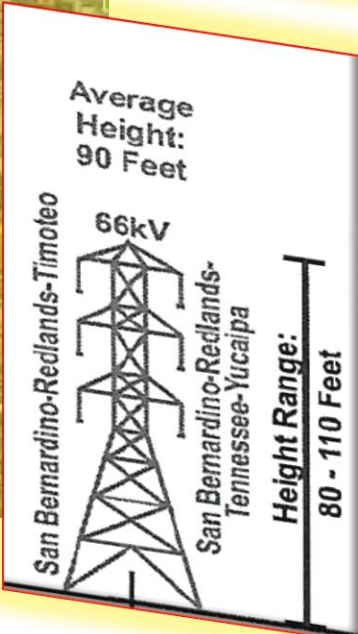


EXISTING POWER LINES



Proposed tower on Nevada St.



OUR PROPOSED ALTERNATE ROUTES, ONE IS 30 FT HIGHER THAN EXISTING POWER LINES OR NEW LINES

People for a Healthy Redlands proposes that SCE either moves the 66kv sub-transmission route to the yellow hash lines where there are existing power transmission poles or undergounds the proposed transmission lines along Nevada Street with their new state of the art, health conscious insulations to mitigate the impact of the VR-8 to less than significant levels.